



**Milestone Road, Crystal Palace, SE19**

2 bedroom flat to let

**£495 Per Week**

Part furnished

## Property Details

A modern bright and airy two double bedroom apartment, nestled next to Crystal Palace "Triangle". This gated development offers all the advantages of modern design and security, including secure off street parking, access to a communal garden and is ideally located a stone's throw from Crystal Palace Overground Station. A smart open-plan reception is the heart of the home, comfortable dimensions to relax and unwind, dine and entertain, with a fully equipped, integrated kitchen opening out onto the space, offering an abundance of storage options and surface space. Both bedrooms are spacious and well-proportioned and are large enough to double up as home office whilst still maintaining comfortable sleeping arrangement the property, the master room benefits from a en-suite and the property is completed by a further family-sized modern bathroom.

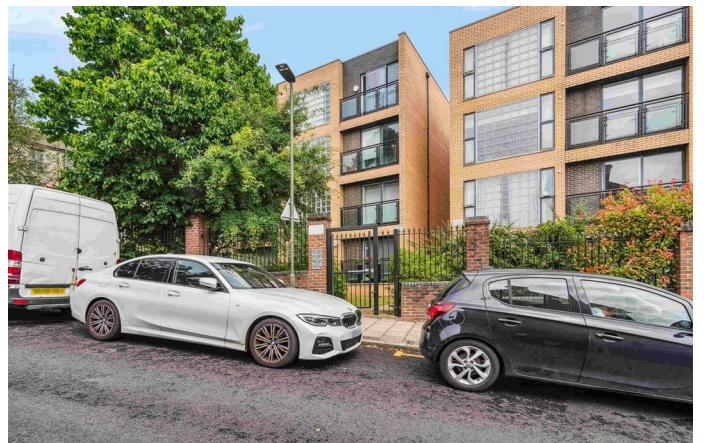
Having access to a green space is now more important than ever for our wellbeing – luckily, the lush, open spaces of the Crystal Palace Park are right next to the property. The property is located in one of South London's new hotspots with popular "Triangle" area just minutes away which offers an abundance of independent shops, cafes, bars & restaurants all on your doorstep.

## Features

- Two bedrooms
- Two bathrooms
- Secure gated development
- Off street secure parking
- Communal gardens
- Close to transport links

**Council tax band D**      **EPC rating B (84)**

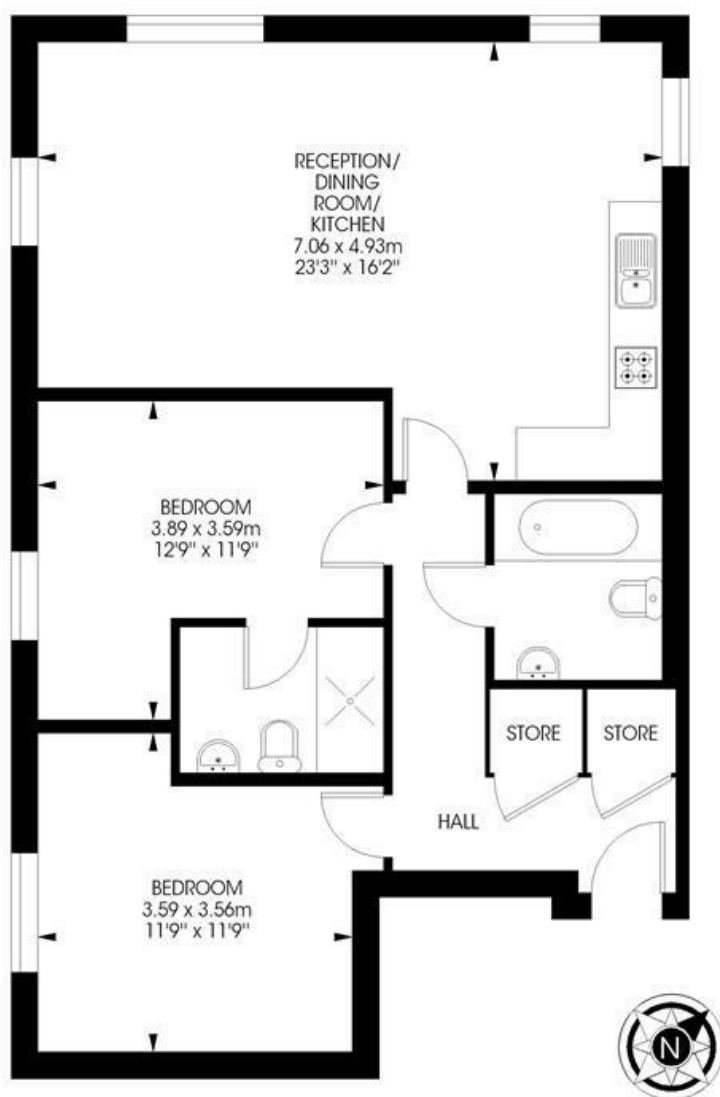




Milestone Road, Crystal Palace, SE19

**Stratos Heights,  
Milestone Road, SE19  
2 bedroom flat**

Approximate internal area: **797 sqft / 74 sqm**



**First Floor**



While we try our very best, floor plans are produced as a guide only and we take no responsibility for the precise accuracy with which any property is represented.



Milestone Road, Crystal Palace, SE19

